

Thommen Medical

The Dedicated, Dental Implant Experts



Elegant Simplicity

In an environment where the primary implant companies have become large and bureaucratic, attempting to cover all areas of dentistry, Thommen is dedicated to being an expert in implant dentistry by providing one comprehensive implant system and respecting the human reality that people work with people. We believe in supporting our partners with a boutique experience, one that utilizes our 30-year heritage of Swiss precision craftsmanship, innovative design, personalized service and overall elegant simplicity.



Positive Stop Platform:

Provides optimal mechanical stability under compressive load; axial stabilization eliminates vertical displacement inherent in tapered connection designs

Stabilization Ring:

Provides optimal mechanical stability and minimal micromovement under lateral load

Focused Compression:

High surface pressure provides focused compression for minimal micro gap and the best possible seal against bodily fluids

Rotational Accuracy:

A 3mm internal hex provides rotational stability especially for single tooth restorations; offers an accurate impression transfer of the implant position to the master model

Optimal Screw Diameter:

The world's smallest abutment screw provides improved aesthetics and strength allowing for increased wall thickness of the implant and abutment

INICELL® Surface:

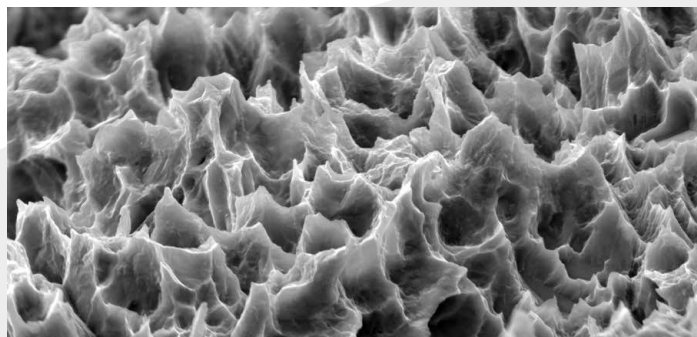
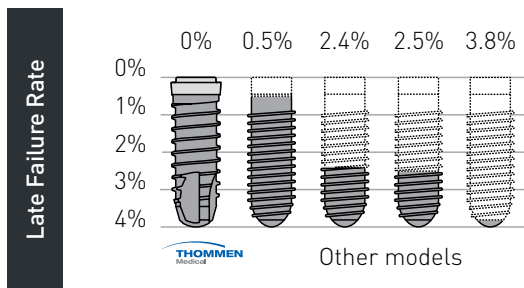
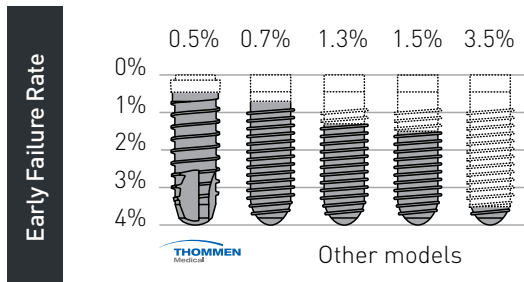
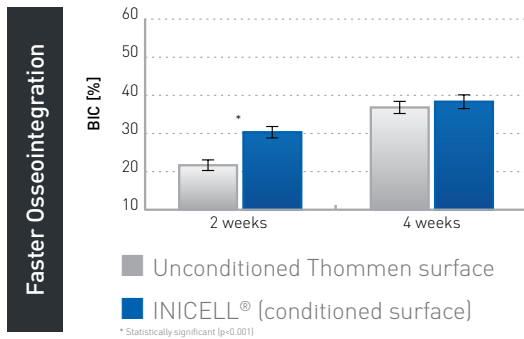
Faster osseointegration and healing with a sandblasted and thermal-acid etched surface; hydrophilic properties

INICELL® Surface Technology

Increased security in the early healing phase with INICELL®

Scientific research suggests:

- Continued increase in stability during the first eight weeks following placement
- Higher implant stability during the early healing phase
- Higher bone-to-implant contact (BIC) in the early healing phase of two to four weeks as well as with immediate placement protocols



Unrivaled Reliability

Improved osseointegration in the early healing phase (Calvo, 2010):

- 40 % higher buccal bone-to-implant contact (BIC) in the early healing phase.
- Higher implant stability.
- More safety in the healing phase.

A follow-up study (Le Gac, Grunder 2015) of almost 3,000 Thommen implants was conducted that spanned up to 6 years, documenting these results:

- An early failure rate of 0.5 % and a late failure rate of 0% was achieved.
- The results achieved by the Thommen implants exceeded not only the average retrospective outcomes in an analysis by the Swedish National Register published at the end of 2014 (Derks, 2014), but also the results of the implant model with the lowest failure rates in this study.
- In a comparison of the two implant models studied (unconditioned and INICELL®), the super-hydrophilic INICELL® surface performed statistically significantly better, thus illustrating the reliability which can be achieved with the INICELL® surface in the early healing phase.

INICELL® = Security From the Start

- Low early failure rate of 0.5 % (Le Gac, Grunder 2015¹).
- Fewer early failures than the best in class (Derks, 2014).
- Shorter healing times for patients with poor bone quality (type III and IV) (Held, 2014).
- A safe and predictable treatment option after only three weeks (Hinkle, 2014).

The Digital Workflow

The Thommen Implant System is part of an end-to-end digital workflow from image capture all the way through delivery of the final prosthesis. Our strategic partnerships and validated workflows play an integral role in our digital offering.

3shape 

exocad

dental wings
A Straumann Group Brand

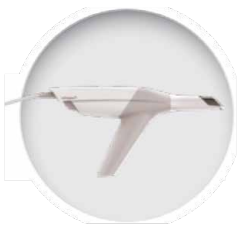
formlabs 

Compatible with all major
intraoral & lab scanners

- 3shape
- exocad
- DWOS

Compatible with all major
3D printer models

- Dental Concept DC1/DC5®*
- imes-icore®*
- VHF®*



SCAN

DESIGN

PRINT

MILL



Scan abutment



Thommen digital libraries:
<http://bit.ly/ThommenLibraries>



Analog for printed model



- Milling abutment, type II*
- Milling abutment, type I
- Titanium Base
- VARIOflex
- VARIOunite

REFERENCES

Pre-clinical:

- Calvo-Guirado JL, Ortiz-Ruiz AJ, Negril B, L opez-Mar  L, Rodr guez-Barba C, Schlottig F. *Clinical Oral Implants Research* 21, no. 3 (2010): 308-15.
- Milleret V, Tugulu S, Schottis F, Hall H, *European Cells and Materials* 21 (2011): 430-44.
- Stadlinger B, Lode AT, Eckelt U, Range U, Schlottig F, Hefti T, Mai R. *Journal of Clinical Periodontology* 36, no. 10 (2009): 882-891.
- Stadlinger B, Ferguson SJ, Eckelt U, Mai R, Lode AT, Loukota R, Schlottig F. *The British Journal of Oral & Maxillofacial Surgery* 50, no 1 (2012): 74-9.
- Tugulu S, Lowe K, Scharnweber D, Schlottig F. *Journal of Materials Science Materials in Medicine* 21, no. 10 (2010): 2751-2763.
- Tugulu S, Hall H, Schlottig F. *Clinical Oral Implants Research* 20, no. 9 (2009): 1024-25 (poster no 376).
- Vasall C, Busenlechner D, Schwarze UY, Leiter HF, Munoz Luzon F, Hefti T, Schattig F, Gruber R. *Clinical Oral Implants Research* 25, no. 12 (2014) 1378-85.

Clinical:

- Derks J, Hakansson J, Wennstrom JL, Tomasi C, Larsson M, Berglundh T. *JDR March* 94 no. 3 suppl (2015): 44-51.
- Held U, Zahnarzt Impliziert 30, no. 2 (2014): 134-142.
- Held U, Rohner D, Rothamel D. *Head and Face Medicine* 9, no. 37 (2013):1-9.
- Hinkle RM, Rimer SR, Morgan MH, Zeman P. *Journal of Oral and Maxillofacial Surgery* 72 no. 8 (2014): 1495-1502.
- Le Gac O, Grunder U. *Dentistry Journal*, no 3 (2015): 15-23.
- van Eekeren P, Tahmaseb A, Wismeijer D. *Clinical Oral Implants Research* 0. (2015): 1-6.

* A Medentika Preface abutmentholder is required to use the Milling Abutment, type II. Compatible milling machines are listed above.

Digital Workflow **Guided Surgery Kit**

The Thommen Guided Surgery Kit supports implant placement through two key approaches: Pilot Guides and Drill Guidance; both allow for optimal positioning when precision is of the utmost importance.



The Thommen **Experience**

One of the advantages of being a dedicated, implant expert is the ability to provide our customers with the personal support and the service they deserve. Our proven products have a 30-year heritage of Swiss precision craftsmanship made in our facility in Grenchen, Switzerland. Everything we do is science based with the goal to improve the quality of life of your patients both in a functional and aesthetic way. Thus, we offer a lifetime guarantee on our implants and prosthetics.



Elegant Simplicity

Headquarters

Thommen Medical AG
Neckarsulmstrasse 28
2540 Grenchen | Switzerland
Tel. +41 61 965 90 20
info@thommenmedical.com

USA / Canada

Thommen Medical USA L.L.C.
1375 Euclid Avenue | Suite 450
Cleveland OH 44115 | USA
Tel. +1 866 319 9800 (toll free)
info.us@thommenmedical.com
orders.us@thommenmedical.com